



www.billbeall.com

2,000 SF Office / Warehouse - **For Lease**

### **3 Oaks Center**

2835 E. Division - Ste. N  
Springfield, MO 65803



### **HIGHLIGHTS**

- 2,000 SF Office / Warehouse
- Located on E. Division just off Hwy 65
- One 12' Overhead Door
- Lease Rate Includes: Taxes, Insurance  
& Common Area Maintenance
- Tenant Pays Trash & Utilities
- \$5.50 / SF Modified Gross
- \$917.00 / Month

FOR ADDITIONAL INFORMATION PLEASE CONTACT

Bill Beall Co., Inc.

2921 S. National Ave., Springfield, MO 65804

(417) 887-5535 email: [beall@billbeall.com](mailto:beall@billbeall.com)

---

## 3 Oaks Center

2835 E. Division

Springfield, MO 65803

---



2921 S. National Ave., Springfield, MO 65804

(417) 887-5535 email: [beall@billbeall.com](mailto:beall@billbeall.com)



---

## 3 Oaks Center

2835 E. Division

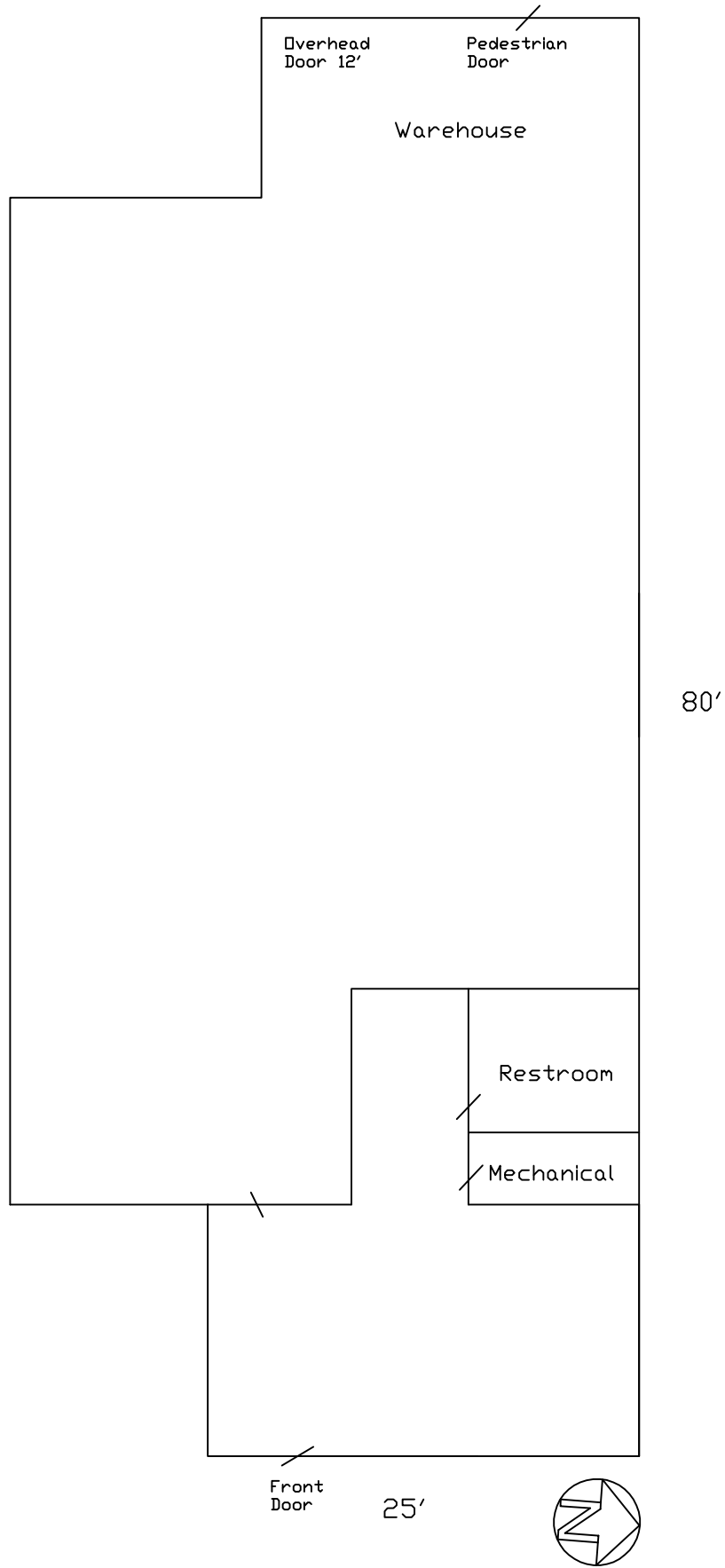
Springfield, MO 65803

---



2921 S. National Ave., Springfield, MO 65804

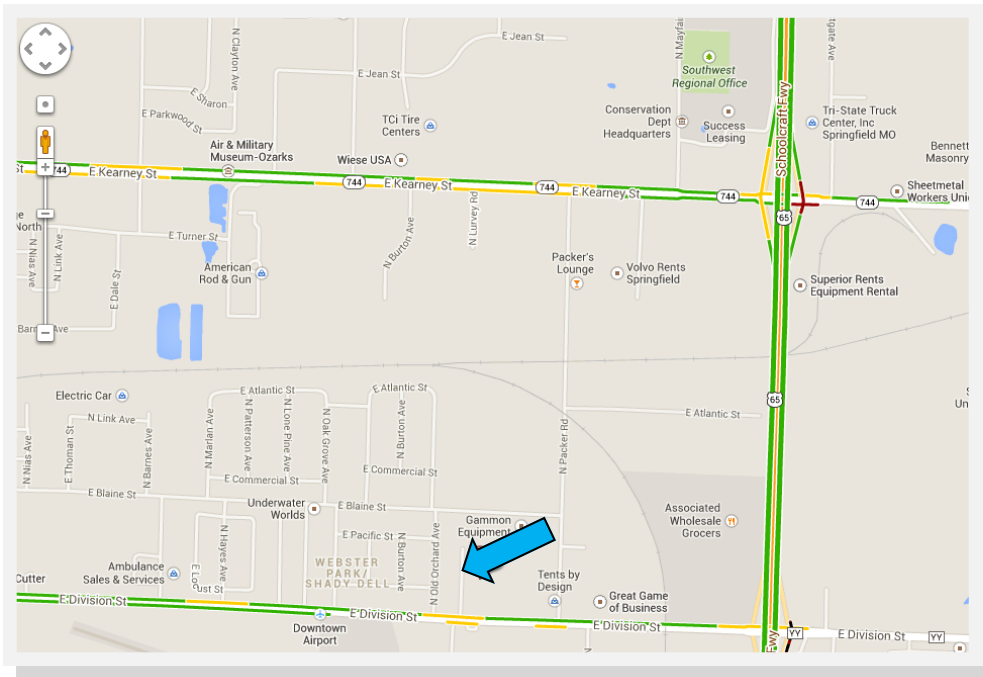
(417) 887-5535 email: [beall@billbeall.com](mailto:beall@billbeall.com)



2835 E Division Ste. N

### 3 Oaks Center

2835 E. Division  
Springfield, MO 65803



2921 S. National Ave., Springfield, MO 65804  
(417) 887-5535 email: beall@billbeall.com